

# Shooting Info A

## 1. Competition Management

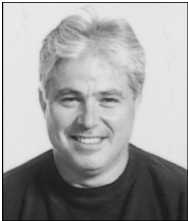
### a. Technical committee

- i. Each Sport has a Technical Committee which is responsible for the Competition and leads the Technical Meeting
- ii. The Secretary of the Technical Committee for Shooting is:

Shooting Clay	Tonia Lushington	Isle of Man	britonia@hotmail.com
Shooting Pistol	Bob Blake	Jersey	bobblake@super.net.uk
Shooting Rifle	Barry Hall	Isle of Wight	ghalliw@aol.com

### b. Rhodes 2007 Competition Management Team

#### i. Team description:



Shooting Coordinator: Kostas Halkiopoulos  
 Email: khalkiopoulos@rhodes2007.info  
 Mobile: +306946005767

Air Guns Coordinator: Vasilis Papageorgiou

Email: vpapageorgiou@rhodes2007.info

Pistol & Rifle Coordinator: ...

Clay Target Coordinator: ...

#### ii. Resume Sport Coordinator

Kostas Halkiopoulos and his team are responsible for organising the Shooting Events for the NatWest Island Games X11 Rhodes 2007. He has been involved with shooting for many years participating in National and International level events as well as being a member of the Greek National IPSC Team and is the Greek IPSC Division Champion.

## 2. Rules

- a. IF rules. The Competition of all sports at the Rhodes 2007 NAT WEST ISLAND GAMES will follow the International rules set by the respective International Federation. The IF rules for Shooting can be read in the website under the address: [www.issf-shooting.org](http://www.issf-shooting.org)
- b. By laws. According to the IGA Constitution separate rules for the Island Games are written and revised by the Technical Committee after the end of the last Island Games Competition. The IGA Executive Committee is responsible to approve any changes. The finals bylaws approved for the Rhodes 2007 NatWest Island Games and were published in October 2006 by IGA are:

### Shooting By-laws

#### 1 Competition Rules and Programme of events.

- 1.1 All shooting events shall be open to men and women, except where comparable gender-specific events are held.

#### 2 Competition Programme

- 2.1 The shooting programme shall include the mandatory events (see 2.2) and preferably, a selection of events in each of the main categories below (see 2.3) and/or such events as may be indicated by both the facilities of the Host Island and their general popularity.

- 2.2 **Mandatory events**, which may be gender-specific, are:

ISSF Air rifle

ISSF Air pistol

ISSF Skeet and Automatic Trap (Ball Trap)

None of the above shall be changed without the unanimous agreement of all the shooting Technical Committees

- 2.3 **Other events**, which may also be gender-specific, and Special Regulations specific to each main shooting category, see:

Centre-Fire Rifle 6.1.1

Smallbore Rifle

6.2.1



Clay Target 6.3.1  
Pistol 7.1.1

- 2.4 Individual and separate Team Competitions will be held in all events. 'Artificial' Team Competitions (adding the scores of the competitors in Individual Competitions) will not be permitted.
- 2.5 All Shooting events will be shot under the rules of competition of the appropriate governing bodies but, wherever local circumstances require, the rules may be varied at the discretion of the Technical Committee.

### 3 Ammunition

- 3.1 When issuing the programme of events, the organisation must make it clear for each event, whether ammunition will be provided, and if so, precisely what calibre and types will be available.

### 4 Island Representation:

Individual 2 competitors  
Team 1 team

### 5 Competition Officials

- 5.1 Numbers and qualifications required would be dependent on the events being staged.

#### 6.1 Centre-Fire Rifle (Special Regulations)

- 6.1.1 Events **may** include:

TR 7.62mm (Queen's Prize Conditions)  
Free Rifle - Prone 300 metres  
Free Rifle - Three positional 300 metres

- 6.1.2 No more than 2 competitors per Island per event will be allowed.

- 6.1.3 The 7.62mm (Queens Prize Conditions) event must be staged in accordance with the rules of the National Rifle Association of Great Britain. All other events will be shot under the rules of the appropriate Governing Body (e.g. ISSF).

#### 6.2 Smallbore and Air Rifle (Special Regulations)

- 6.2.1 Events must include:

ISSF Air Rifle 10 metres

Events **may** include:

ISSF Prone 50 metres  
ISSF Three positional 50 metres  
NSA Prone 100 yards

- 6.2.2 No more than 2 competitors per Island per event will be allowed.

- 6.2.3 The Prone Rifle 100 yards event will be shot under the rules of the National Smallbore Rifle Association. All other Smallbore and Air Rifle events will be shot under the rules of the appropriate governing body (e.g. ISSF).

#### 6.3 Clay Target (Special Regulations)

- 6.3.1 Events must include:

ISSF Skeet

ISSF Automatic Trap (Ball Trap)

Events **may** include:

Olympic Trap  
Universal Trench  
Sporting  
Double Trap

- 6.3.2 No more than 2 competitors per Island per event will be allowed to compete in any Clay Target event, except in Sporting. **If a Sporting event is included a team may consist of 3 competitors with the two highest scores to count for the Team medals.** All 3 competitors' scores will count in the Individual Sporting event, only if they have competed in the Team Event. (NOTE: No practice is allowed prior to a Sporting event, as it is in other disciplines, and this rule is intended to reduce the inherent advantage of the Host Island team).

- 6.3.3 All Clay Target events will be shot under the rules of the appropriate Governing Body (e.g. ISSF, FITASC and CPSA).

- 6.3.4 Shooting jury to consist of Chairman, Vice Chairman, Secretary of the Technical Committee and two shooters from each of the disciplines participating.

- 6.3.5 Competition squads to be drawn randomly by the appointed jury with no more than 1 competitor from each island in the squad where possible.

- 6.3.6 Squad fillers will be allowed but must be spread throughout the squads **and not all in the last squad.**

- 6.3.7 All entries to the competitions must be registered with the Jury prior to the official practice commencing.

- 6.3.8 All Olympic Finals must be over Flash Clays and the ranges set up by the Jury prior to commencement of the finals.

- 6.3.9 The maximum shot load will be 28gms. Cartridge shot size will be - Minimum 7-Maximum 9. **No automatic or pump action shotguns will be allowed for any of the Trap disciplines.**

- 6.3.10 The Technical Committee will check cartridge loads.

- 6.3.11 Host Island will supply all competition clays and cartridges for the events, at no charge. (*Note: this has been the practice from the first Island Games and the Technical Committee feels that it should be in the Byelaws so that it does not get changed in the future.*)

- 6.3.12 All clay target ranges must be checked and approved by the technical committee prior to any event commencing and also prior to official practice commencing.

- 6.3.13 In all ties for medal positions, there will be a shoot-off for podium positions. Third place medals will be awarded to all those who have competed in the tie but have failed to gain a podium position. (NOTE: This has been the practice since the first Island Games).

- 6.3.14 Any sporting shoot-off shall be over 3 stands, drawn at random by the Jury from the stands shot in the competition. If a tie still exists after three stands, then a sudden death shoot off would take place on the last stand shot in the shoot off.

- 6.3.15 In all ISSF Trap events the colour of the clays will be orange. In ISSF Skeet the colour should be orange unless for environmental reasons the colour is to be different. The Host Island will seek approval from the Technical Committee six months prior to the Games if the colour is not to be orange, so that the Technical Committee can inform all participating Islands in good time.

**7.1. Pistol (Special Regulations)**

7.1.1 Events must include:

ISSF Air Pistol 10 metres

Events **may** include, but are not limited to:

ISSF Free Pistol

ISSF Rapid Fire Pistol

ISSF Standard Pistol

ISSF Centre Fire

ISSF Sport Pistol

Police Pistol 1 (Non ISSF)

Police Pistol 2 (Non ISSF)

PPC 1500 (Non ISSF)

Practical Target Pistol (Non ISSF)

Service Pistol B (Non ISSF)

Bianchi Cup (Non ISSF)

Black Powder (Non ISSF)

Man v Man (Non ISSF)

Long Range (Non ISSF)

7.1.2 No more than 2 competitors per Island per event will be allowed.

7.1.3 All Pistol events will be shot under the rules of the governing body (e.g. ISSF, NRA of America, NPA, MLAIC, ILRPSA, HBSA etc.).

7.1.4 Subject to the facilities, interest and competence available to the Host Island, the Host Island will preferably offer a selection of both ISSF

and Non-ISSF pistol events in addition to the mandatory ISSF Air Pistol event.

A questionnaire listing all the pistol events to be offered by the host island **will** be distributed to all competing pistol and other teams at the prior Games (and by post to other Member Island Associations immediately following the prior Games).

7.1.5 The final programme is to be based on the results of the questionnaire and should preferably consist of the mandatory ISSF Air Pistol event, plus a balanced selection of at least the two most popular other ISSF events, and the two most popular Non-ISSF events, with further programme capacity being taken up by the most popular events of either category.

7.1.6 Where any Non-ISSF event is being offered in the shooting programme, the rules of the competition must be circulated to the membership for their information at the same time as the programme of events.

7.1.7 Where any Non-ISSF event is being offered in a questionnaire, an outline of the competition(s) should be included.

### 3. Competition Facilities

**a. Description:**

i. The facility for the air guns will be held in a new built facility called Kapodistriou shooting Range

ii. The facility for Shotguns shooting will be held in a new build facility called Afandou Shooting Range.

iii. The facility for Cartridge Pistol, smallbore Rifle and practical shooting will be held in a new build facility called Kalamonas Shooting Range.

b. All competition venues will open on the 29 June 2007 and will close according to the end of Competition of each sport

### 4. Competition Clothing

We encourage the member Islands participating in Shooting to wear light clothing.

### 5. Extra Services

a. Water will be available for the athletes for each game. Athletes will receive their bottle of water from the Games office before each game.

b. In order to provide our participating islands the best possible service, there will be a weather forecast distributed on the beginning off every day's session at the venue and at the Sports Information Centre.

c. Well secured storage areas will be available at all venues.

## 6. Transportation

Transportation during the Rhodes 2007 NatWest Island Games is organized and provided, to accredited persons, by the Organising Committee. Transportation services begin for the arrival of the teams until their departure. Officially, the transportation to the Venues and the Games Village will start on the 29 July until the 6 July 2007. A transport plan has been organized and includes Transport from and to the Airport, four Shuttle Bus lines, direct transport to venues as well as direct transport to venues not included in the shuttle lines. The organising committee will try to fulfill all transport needs to and from the venues according to the needs of each Sport. See the shuttle bus map on page 22.

## 7. Sport Party

It is tradition in the Island Games history that each sport does its own separate party. The Shooting party will be held on Tuesday 3 July at 22:00.