

# Tennis Info A

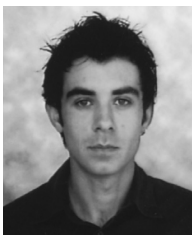
## 1. Competition Management

### a. Technical committee

- i. Each Sport has a Technical Committee which is responsible for the Competition and leads the Technical Meeting
- ii. The Secretary of the Technical Committee for Tennis is:  
Mr. Carmel O'Connor  
E mail: ccocidr@jerseymail.co.uk

### b. Rhodes 2007 Competition Management Team

#### i. Team description:



Tennis Sport Coordinator: Antonis Kountouris  
E mail: akountouris@rhodes2007.info  
Mobile: 6974876001

Tennis Administrator: Goerge Soulounias  
E mail: gsoulounias@rhodes2007.info

#### ii. Resume Sport Coordinator

Antonis Kountouris is a Recreation Leadership and Management as well as a Recreation Tennis Teaching major, studying and playing successful tennis in the USA. He won the Gold Medal in the Isle of Man in 1999 and in Gotland in 2001, Island Games. Now being a member of the Greek Tennis Coaches Association and with previous experience in coaching, he is the Head Coach at the Rhodes Tennis Club. He has established a working team preparing the most exciting Tennis Tournament ever in the Island Games history!

## 2. Rules

- a. IF rules. The Competition of all sports at the Rhodes 2007 NAT WEST ISLAND GAMES will follow the International rules set by the respective International Federation. The IF rules for tennis can be read in the website under the address: [www.itftennis.com](http://www.itftennis.com)
- b. By laws. According to the IGA Constitution separate rules for the Island Games are written and revised by the Technical Committee after the end of the last Island Games Competition. The IGA Executive Committee is responsible to approve any changes. The finals bylaws approved for the Rhodes 2007 NatWest Island Games and were published in October 2006 by IGA are:

### Tennis By-laws

#### 1 Tournament regulations.

- 1.1 The Tournament will be played in accordance with the current rules and regulations of the International Tennis Federation (ITF), as well as the rules of the governing body of tennis used by the host country.

#### 2 Tournament Events

- 2.1 The events to be held are:
 

Men's Singles	Ladies Singles
Men's Doubles	Ladies Doubles
Men's Team Event	Ladies Team Event

In addition Mixed Doubles will be played at the discretion of the Host Island.

#### 3 Island Representation:

- 3.1
 

Men's Singles	4 competitors
Ladies Singles	4 competitors
Men's Doubles	2 pairs
Ladies Doubles	2 pairs
Mixed Doubles	4 pairs
Team Competition	1 team



- 3.2 Islands may only bring a maximum of 5 men and 5 women players to the Games.
- 3.3 All players must have reached their fourteenth birthday by the day of the Opening Ceremony.

**4 Tournament Officials**

- 4.1 1 Tournament Referee  
Scorers for the Team Event finals and for Individual Event Semi-finals and finals.

**5 Medals**

- 5.1 Medals will be awarded as follows:  
 Men's Singles 1 Gold, 1 Silver, 2 Bronze (losing semi-finalists)  
 Ladies' Singles 1 Gold, 1 Silver, 2 Bronze (losing semi-finalists)  
 Mixed Doubles 2 Gold, 2 Silver, 4 Bronze (losing semi-finalists)  
 Men's Doubles 2 Gold, 2 Silver, 4 Bronze (losing semi-finalists)  
 Ladies' Doubles 2 Gold, 2 Silver, 4 Bronze (losing semi-finalists)  
 Men's Team up to 4 Gold, up to 4 Silver, up to 4 Bronze  
 Ladies Team up to 4 Gold, up to 4 Silver, up to 4 Bronze
- 5.2 Medal table points will be awarded in accordance with the IGA Constitution, or the instructions of the Executive Committee.

**6 Match Regulations**

- 6.1 All matches shall be the best of three sets, with a tie break at 6 - 6 in each set. A Championship tie-break game may be played in place of a third set in the event if inclement weather, or due to lack of time. If a Round Robin format is used, the Championship tie-break game will apply in place of the third set in the Group part of the event.
  - 6.2 New balls will be used for each match. A minimum of three will be provided.
  - 6.3 The winner of each match will return the balls and the match score to the tennis office, and discover where and when their next match will take place.
  - 6.4 The Host Island will decide on the make and type of recognised championship tennis balls to be used at all Games matches.
  - 6.5 Islands should be notified of the match balls decision four months before the commencement of the Games.
  - 6.6 Suitable tennis clothing and shoes must be worn by all competitors in Games matches.
- The name of the Island may be displayed on a player's kit. In addition, the sponsors' logo should only be within the limitation specified in current ITF rules.

**7 The Draw**

- 7.1 The Technical Committee in conjunction with the Tournament Referee will draw up the seedings for the Islands for the Team Event and the players for the Individual and Doubles Events. Due notice will be taken of all seedings produced by the different National Bodies, inclusive of the Host Island.
- 7.2 Any Draw may be supervised by the International Observer, if present, and the Tournament Referee (or his/her representative) and will be made by the Technical Committee.
- 7.3 The Draw for the Team Events should be done prior to the start of the events. All teams should play at least once on the first day so those standards may be assessed for the Individual Events, the draw of which will take place that evening.
- 7.4 The Draw for the Individual events should be done prior to the start of the events. Each Team should send their Team Manager, or representative, to the draw.

**8 Team events**

- 8.1 Each Island may enter one team in the Men's Event.
- 8.2 Each Island may enter one team in the Ladies Event.
- 8.3 Each Island may nominate up to four players for each team (minimum of two). No extra players may be added throughout the Team event, even in the case of injury (except by application to the jury). Should the team earn medals, all nominated players will receive a medal, regardless of whether they played or not.
- 8.4 The actual playing order of the Team must be nominated to the officials 30 minutes before the scheduled start time of the match, but not before the completion of the previous match of the Team.
- 8.5 Doubles pairings shall be nominated after the conclusion of the second singles match to be played.
- 8.6 Team event sequence, match and order of play
 

	Team A	v	Team B
1st match	No. 1 Singles nominated player	v	No. 1 Singles nominated player
2nd match	No. 2 Singles nominated player	v	No. 2 Singles nominated player
1st match	No. 1 Doubles nominated players	v	No. 1 Doubles nominated players
- 8.7 The Doubles match will not commence until both Singles matches are over.
- 8.8 There will be a minimum of 30 minutes and a maximum of one hour between the end of the last singles match and the start of the doubles match.
- 8.9 Matches will be continuous, unless weather affected.
- 8.10 Teams may be required to play two Team Matches in one day.
- 8.11 Davies Cup rules of coaching apply, i.e. for each match in the team competition; a player may receive coaching from one team official, who is sitting on court-side, but only when changing ends at the conclusion of a game.



**9 Individual events**

- 9.1 The maximum number of players to be entered from each Island shall be:  
 4 persons in each Singles event  
 2 pairs in each of the Men's and Ladies Doubles events  
 4 pairs in the Mixed Doubles event.  
 No player may enter more than two individual events.  
 (Note: In no event may players from different Islands team up together.)
- 9.2 One month before the Games, each Island should confirm its players, in order of merit, for the singles events. In addition, the number of pairs for the doubles events should be confirmed.
- 9.3 The draw for these events will be done after the first day's play of the Team Events. Each Team should send their Team Manager, or representative, to the draw.
- 9.4 No coaching may take place during individual events.
- 9.5 There will be two Bronze medals awarded in each event i.e. each losing semi-finalists shall receive a medals providing that they have not been defaulted under the Code of Conduct.
- 9.6 The minimum time between a player's matches will be 30 minutes. The maximum time between consecutive matches will be one hour.

**10 Recommendations**

- 10.1 Teams should bring their own balls for practice.
- 10.2 Teams should bring their own Island flag or emblem to decorate the tennis area.
- 10.3 Details of the court surface to be used should be passed on to Islands as soon as possible.
- 10.4 The priority order of events will be: -  
 (a) Team Event  
 (b) Men's and Ladies Singles  
 (c) Men's and Ladies Doubles  
 (d) Mixed Doubles.
- 10.5 Should any event not be completed, no medals for that event will be awarded, except where the event has reached the medal stage. In such circumstances only Bronze and Silver medals can be awarded.

### 3. Competition Facilities

**a. Description:**

All tennis competitions will be held in the facilities of the Rhodes Tennis Club. Five (5) green set courts and three (3) clay courts with stands with a total of 250 seats for spectators. All supportive facilities are available.

- b. All competition venues will open on the 29 June 2007 and will close according to the end of Competition of each sport

### 4. Extra Services

- a. Water will be available for the athletes for each game. Athletes will receive their bottle of water from the Games office before each game.
- b. The games balls will be provided by the Organising Committee and the athletes will receive their balls also from the Games office before each game. The athletes must return the balls after each game to the Games office when announcing the result.
- c. A stringing machine will be located in the facility where athletes can leave their rackets, to the responsible staff, to be fixed.
- d. In order to provide our participating islands the best possible service, there will be a weather forecast distributed on the beginning of every day's session at the venue and at the Sports Information Centre.

### 5. Competition Clothing

We encourage all member island's athletes that will participate in the tennis Tournament to wear light cotton clothing, including hats due to the warm climate at that time of the year. Also, we encourage the member islands to print the initials of the island in the back of the T-shirts to help the spectators to follow the competitions better.

### 7. Transportation

Transportation during the Rhodes 2007 NatWest Island Games is organized and provided, to accredited persons, by the Organising Committee. Transportation services begin for the arrival of the teams until their departure. Officially, the transportation to the Venues and the Games Village will start on the 29 July until the 6 July 2007. A transport plan has been organized and includes

Transport from and to the Airport, four Shuttle Bus lines, direct transport to venues as well as direct transport to venues not included in the shuttle lines. The organising committee will try to fulfill all transport needs to and from the venues according to the needs of each Sport.

## 8. Sport Party

It is tradition in the Island Games history that each sport does its own separate party. Following you can find the schedule of the sports party. The tennis party will be held on 3 July at 21:00

## 9. Referee

The Referee of the tournament will be Mr. Keith Dewick.

